

CERTIFIED LAND CORNER RECORDATION

1/4 Cor
T.
14 13 ● 18
N.
R. 66 W. R. 65 W.

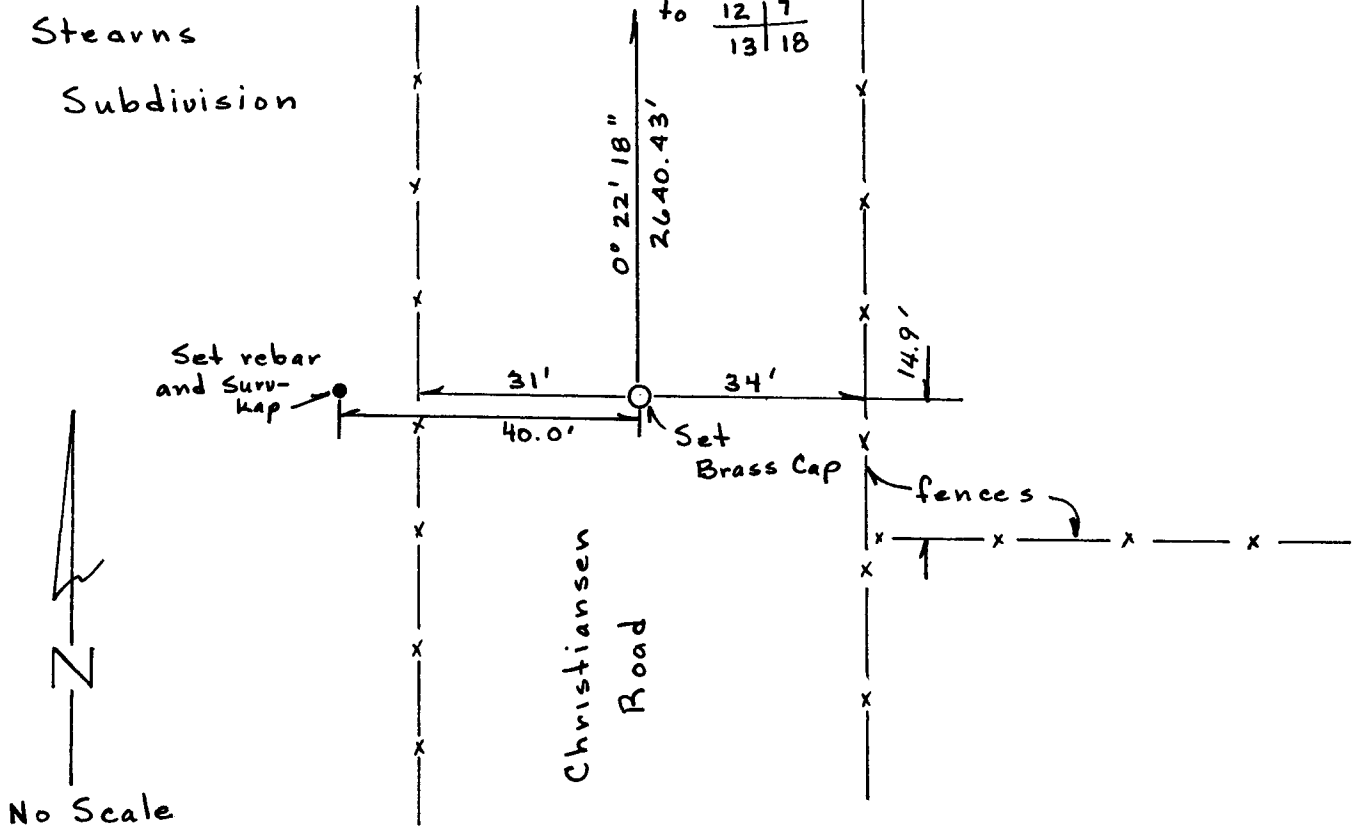
DESCRIPTION OF CORNER EVIDENCE FOUND, AND ORIGINAL RECORD (If known)

No evidence found. Corner re-established proportionately.

DESCRIPTION OF MONUMENT AND ACCESSORIES ESTABLISHED TO PERPETUATE THE ORIGINAL LOCATION OF THIS CORNER:

Set 2" x 36" iron pipe with 2" Brass Cap.
Set 5/8" rebar with Surv-kap, 270°29'49", 40.00'.

SKETCH, WITH COURSE AND DISTANCE TO ADJACENT CORNER IF DETERMINED IN THIS SURVEY.
(May Sketch or Paste Reproduction on Reverse Side.)



I, Robert C. Corbet, L.S. #495 certify that I have carefully performed or reviewed the work done on the diagrammed corner as reported on this recordation form and approve the same.

Robert C. Corbet
Signature of Surveyor L.S. 495
Registration No.

STATE OF WYOMING,
Office of Clerk and Recorder,
County of Laramie

778065

This "corner record" was filed for record on the FEB 6 1985 day of 1985, 19____, was noted on the cross-index plat and is assigned page No. _____, in book No. _____.

James C. Whitehead
County Official

Cross Index No. _____	T. _____	R. _____	Mer.
_____	T. _____	R. _____	Mer.
_____	T. _____	R. _____	Mer.
_____	T. _____	R. _____	Mer.
_____	T. _____	R. _____	Mer.
_____	T. _____	R. _____	Mer.
_____	T. _____	R. _____	Mer.

L-25 T14 R66